



JMR Sporting

Yearlong Sporting Destination

(An Entity of JMR Infotech)

EZY
SEATING

Stadium Seating

ALL PRODUCTS

The Best Choice for Cricket Stadium Seats



Parte

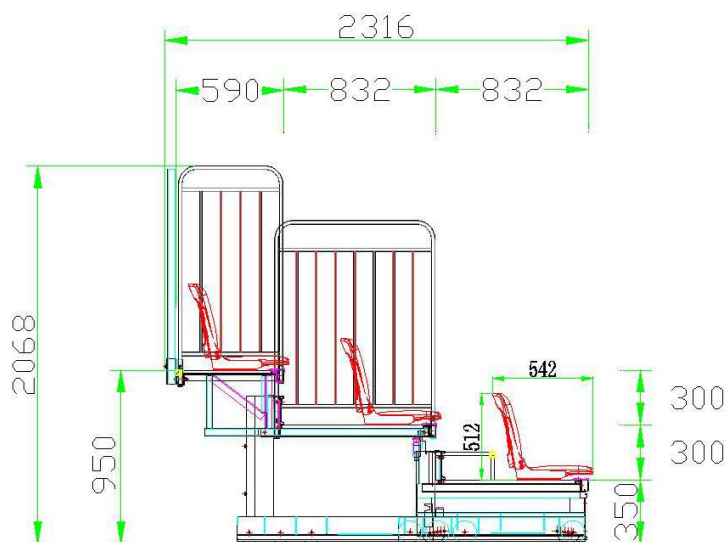
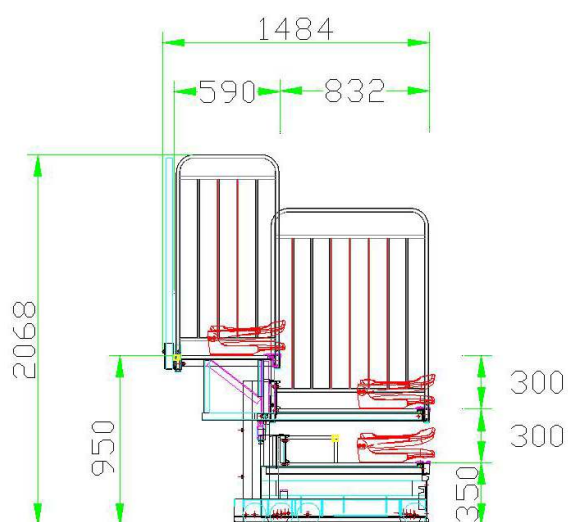


Product name:
Parte high back folding chair

Product specifications:
432W x 542D x 512H

Ideal for

Meeting Rooms
Auditoriums
Multi-functional Halls etc.





Parte

Spare parts and product characteristics

Seat material introduction: The use of high-density polyethylene (HDPE) as raw material, hollow blow molding, the material has good waterproof and impact resistance, mechanical strength and chemical stability, with good weather resistance (heat resistance and cold resistance), seat color selection professional color master batches, to ensure long-lasting beauty. Seat color can be customized according to customer requirements, but also for different site characteristics design personalized color scheme.

Seat folding bracket: The front bracket using 3mm thick hot-rolled plate as raw material, this hot-rolled plate has better toughness and ductility, by laser cutting material, bending, welding molding (high dimensional accuracy), molding after grinding, sand blasting and rust removal and then do surface powder blasting treatment (requires spray thickness of not less than 80 m), the finished product appearance simple and beautiful.

Soft packed service: The seat can be configured with soft-packed chair surface, using advanced fabrics, wear-resistant anti-fading, more comfortable sitting, lined with high-density cold foaming cotton, enhance the durability of the seat, seat color can be customized according to customer needs.

Optional accessory description: A. Seat number plate (with stainless steel screws).



Bien-être

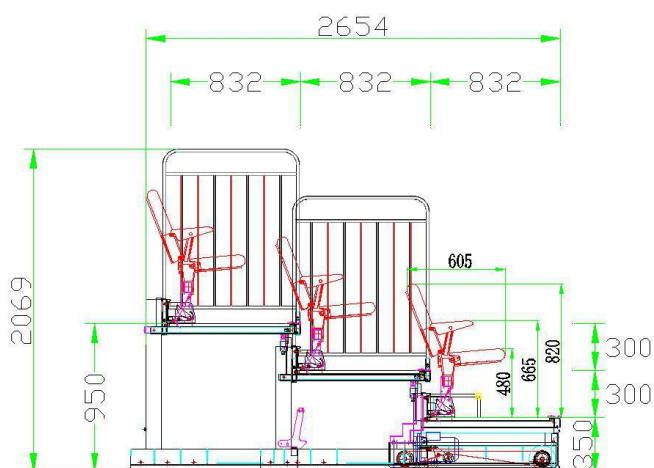
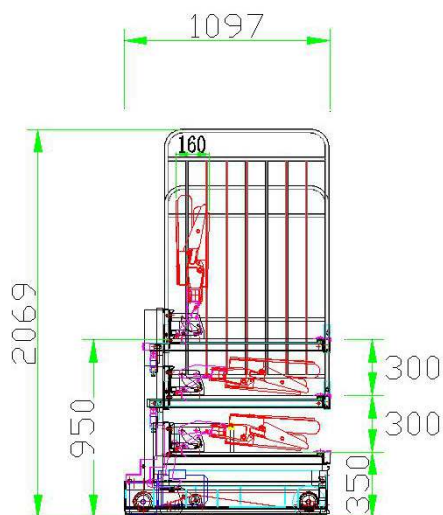


Product name:
Bien-être high back folding chair

Product specifications:
440W x 605D x 820H

Ideal for

Meeting Rooms
Auditoriums
Multi-functional Halls etc.





Bien-être

Spare parts and product characteristics

Cloth: The use of special high-grade linen fabrics, strong penetration, environmental protection wear resistance, full of elasticity, through the national textile products quality supervision and inspection center testing, to meet the national textile-related standards.

Armrests: Support using high-quality high-strength die-cast aluminum alloy refined, no welding joints, surface after oil removal rust after high-temperature electrostatic spraying treatment, beautiful, practical, corrosion-resistant.

Seat/back sponge: High-density flame retardant polyurethane stereotyped sponge raw materials imported by BASF Chemical Company of Germany, adding high-efficiency flame retardant elements, cold solid foaming into one form of high-quality sponge. Fire protection level up to the latest national standard B1 level. When compressed by 70%, 90,000 tests are made and the amount of permanent deformation $\leq 3\%$. Back sponge density up to 50 to 55Kg/m³. Sponge density of 55 to 60Kg/m³.

Seat / back plate: The use of high-quality high-density 15mm thick hardwood splints, by high temperature and high pressure mold, press mold molding, stable shape, good force.



Bien-être

Seat bag response mechanism: The use of gravity automatic return system, precise positioning, reply to low noise. Practical, reliable and significantly increases seat life.

Beams and folding mechanism: Beams using high-quality carbon cold-rolled steel by mold stamping, welding, grinding, oil removal and rust after static spraying, durable, rust-resistant corrosion resistance Q235, in line with GB50017-2003 "steel structure design specifications", the use of the company's independent research and development of patent specifications of the folding mechanism, can be pneumatic folding, turning and flipping process more smooth, labor-saving, in place self-locking, safe and reliable, sensitive movement.

Optional accessory description: A. Seat number plate; B. number plate; C. high-quality high-density hardwood outer board.



Avantè



Designed to be reliable, durable and comfortable sports seats in the game.

Combining practical and aesthetic qualities with high durability parameters, Ace Seats are intended for both indoor and outdoor facilities (weather resistant) - stadiums, event halls and other accessory buildings.

Specifications

Size: W430mm*D600mm*H835mm

Material: HDPE

C/C Size: 490-510mm

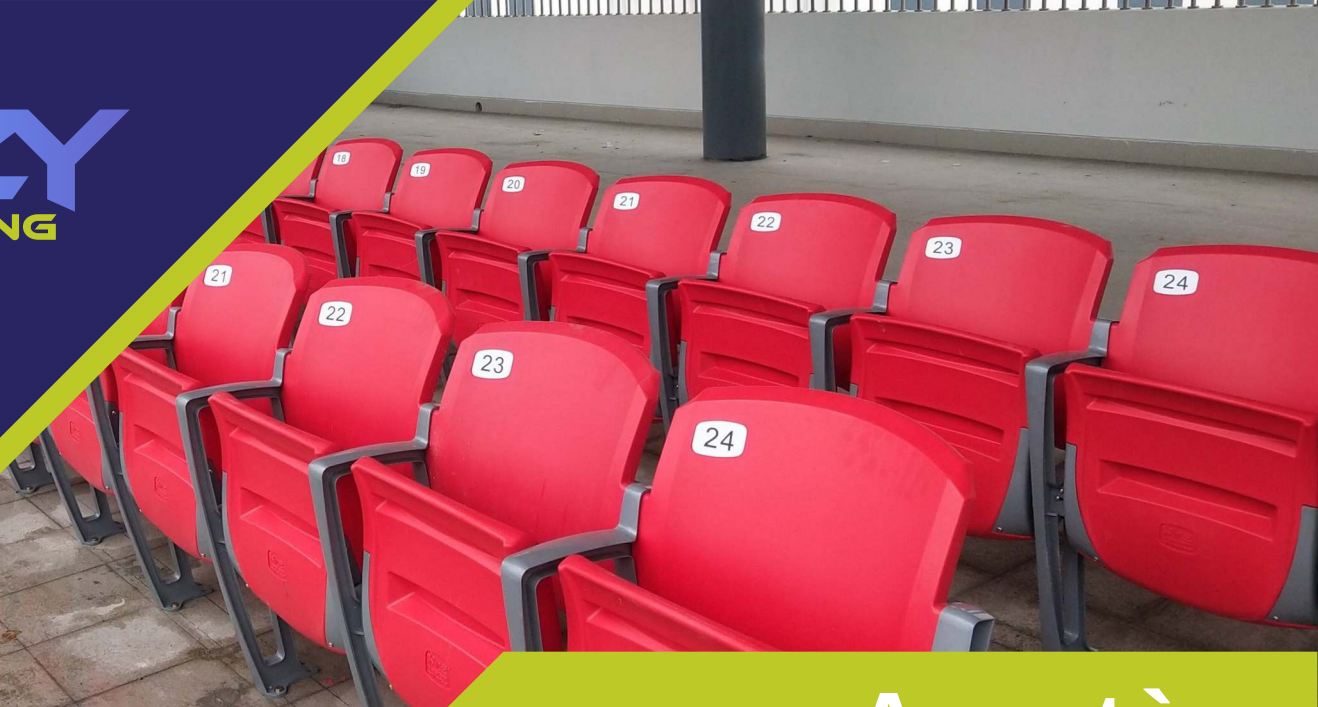
Color: Customized

Processing Technic: Blow molding

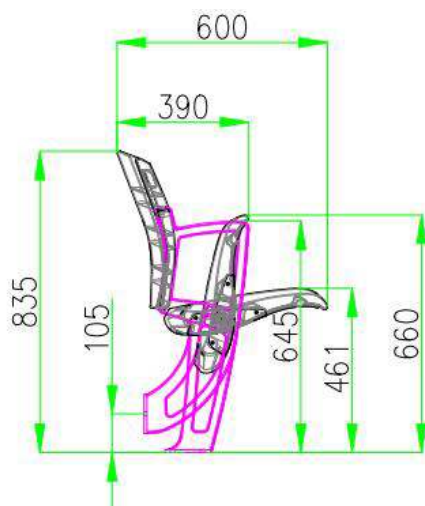
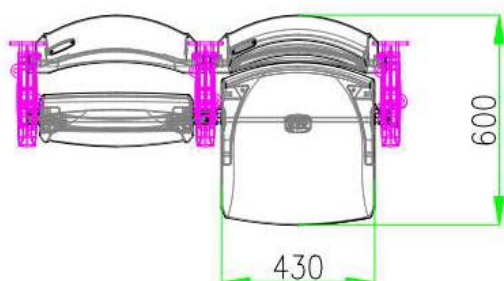
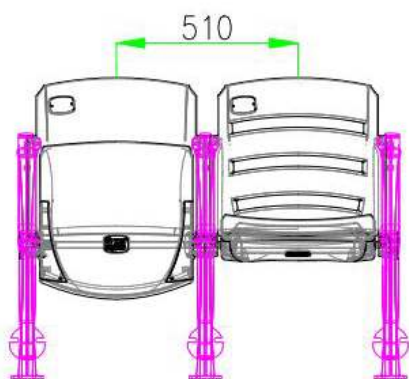
Installation Method: Floor Mounted/ Flat Mounted / Wall Mounted/ Riser Mounted

Conditions: Outdoor/Indoor

Features: Anti-aging, Anti-UV, Fireproof, Fire resistant, High durability



Avantè



Detailed Size

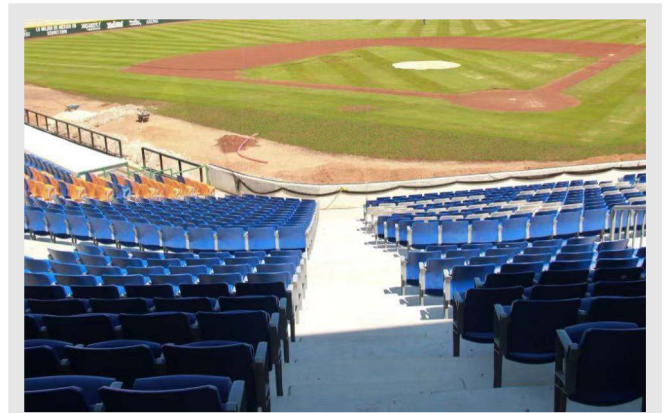
Seat width 430mm

Seat depth open: 600mm

Seat depth close: 390mm

Seat centre to Centre space: 490-510mm

Seat height : 835mm (floor mounted)





Rèconforter

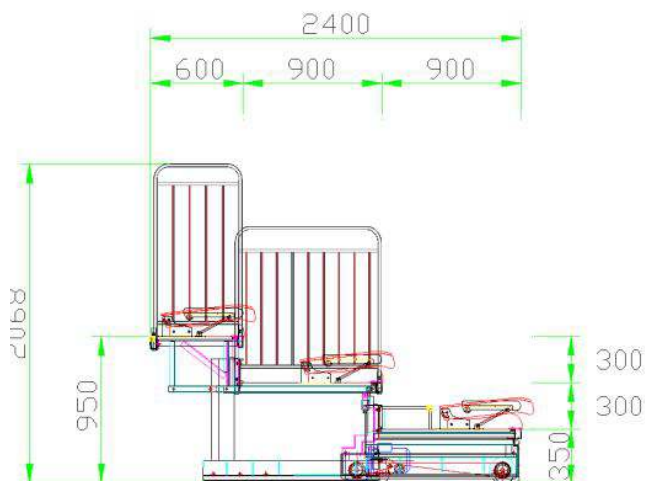
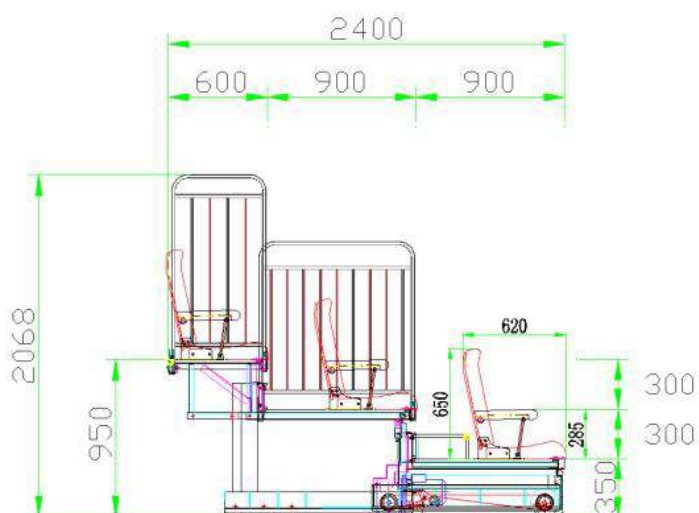


Product name:
Rèconforter high back folding chair

Product specifications:
450W x 620D x 650H

Ideal for

Meeting Rooms
Auditoriums
Multi-functional Halls etc.



Rèconforter

Spare parts and product characteristics

Cloth: The use of special high-grade linen fabrics, strong penetration, environmental protection wear resistance, full of elasticity, through the national textile products quality supervision and inspection center testing, to meet the national textile-related standards.

Armrests: The seat can be equipped with armrests, which are solid wood and sprayed with environmentally friendly paint after polishing. Beautiful, practical and corrosion resistant.

Seat/back sponge: the use of imported high-density flame retardant polyurethane shaped sponge raw materials, add high-efficiency flame retardant elements, cold solid foaming into one form of high-quality sponge. Back sponge density up to 50 to 55Kg/m³. Sponge density of 55 to 60Kg/m³.

Seat / back plate: The use of high-quality high-density 15mm thick hardwood splints, by high temperature and high pressure mold press mold molding, stable shape, good force.

Seat outside the board: High-quality high-density hardwood multi-layer board, by mold and inner plate with the mold cold pressure refined, beautiful and generous, anti-deformation, polishing paint.

Soft bag folding mechanism: Manual folding system, armrests and seats synchronous folding, low noise. Practical, reliable and significantly increases seat life.

Optional accessory description: A. Seat number plate; B. Number plate.



Elegancia

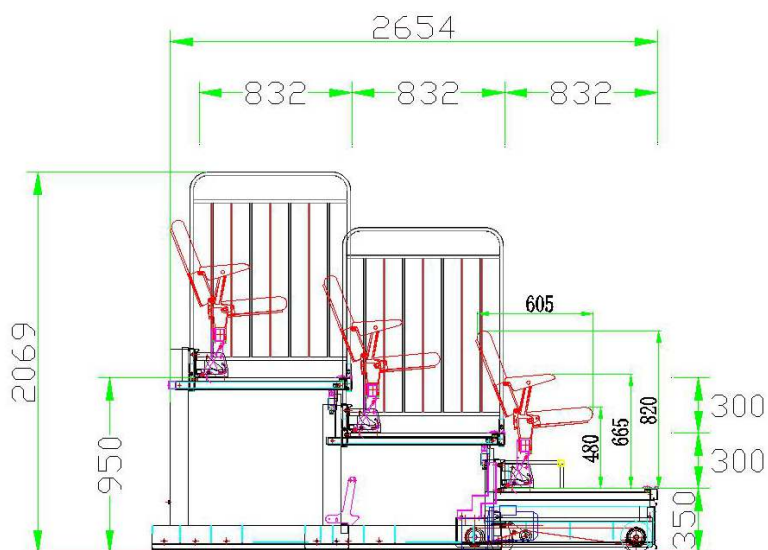
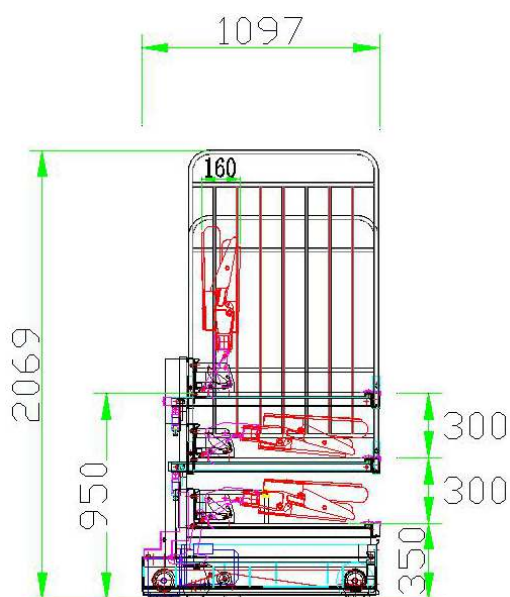


Product name:
Elegancia high back folding chair

Product specifications:
440W x 605D x 820H

Ideal for

Meeting Rooms
Auditoriums
Multi-functional Halls etc.



Elegancia

Spare parts and product characteristics

Cloth: The use of imported high-grade linen fabrics, strong penetration, environmental protection wear-resistant, flexible, through the National Textile Products Quality Supervision and Inspection Center testing, to meet the national textile-related standards.

Armrests: Armrest support using high-quality high-strength die-cast aluminum alloy refined, no welding joints, surface after oil removal rust after high-temperature electrostatic spraying treatment, beautiful, practical, corrosion-resistant.

Seat/back sponge: High-density flame retardant polyurethane stereotyped sponge raw materials imported by BASF Chemical Company of Germany, adding high-efficiency flame retardant elements, cold solid foaming into one form of high-quality sponge. Fire protection level up to the latest national standard B1 level. When compressed by 70%, 90,000 tests are made and the amount of permanent deformation $\leq 3\%$. Back sponge density up to 50 to 55Kg/m³. Sponge density of 55 to 60Kg/m³.

Seat / back plate: The use of high-quality high-density 15mm thick hardwood splints, by high temperature and high pressure mold press mold molding, stable shape, good force.

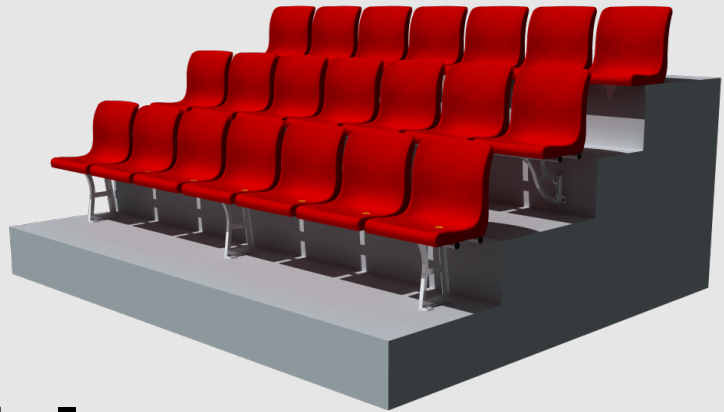
Elegancia

Spare parts and product characteristics

Seat bag response mechanism: The use of gravity automatic return system, precise positioning, reply to low noise. Practical, reliable and significantly increases seat life.

Beams and folding mechanism: Beams using high-quality carbon cold-rolled steel by mold stamping, welding, grinding, oil removal and rust after static spraying, durable, rust-resistant corrosion resistance Q235, in line with GB50017-2003 "steel structure design specifications", the use of the company's independent research and development of patent specifications of the folding mechanism, can be pneumatic folding, turning and flipping process more smooth, labor-saving, in place self-locking, safe and reliable, sensitive movement.

Optional accessory description: A. Seat number plate; B. number plate; C. high-quality high-density hardwood outer board.



Reliable Durable Comfortable

fixed seating
solution for you



JMR Sporting

Yearlong Sporting Destination

(An Entity of JMR Infotech)

www.jmrsporting.com

PRODUCTS

The Best Choice for Cricket Stadium Seats